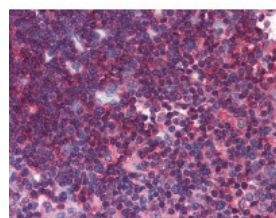




LAT Antibody [LAT.10-17 (10-17)]

CATALOG NUMBER: 51-355



Immunohistochemistry of human thymus
tissue stained using LAT Monoclonal
Antibody.

Specifications

SPECIES REACTIVITY:	Human
TESTED APPLICATIONS:	IHC, IP, WB
APPLICATIONS:	LAT antibody can be used in ELISA, Western Blot, and immunohistochemistry starting at 2.5 ug/mL.
USER NOTE:	Optimal dilutions for each application to be determined by the researcher.
IMMUNOGEN:	Human LAT
HOST SPECIES:	Mouse

Properties

PURIFICATION:	Affinity Purified
PHYSICAL STATE:	Liquid
BUFFER:	PBS, pH 7.2, <=0.09% sodium azide
STORAGE CONDITIONS:	Store LAT antibody at 4 °C. As with all antibodies avoid freeze/thaw cycles
CLONALITY:	Monoclonal
ISOTYPE:	IgG1,k
CONJUGATE:	Unconjugated

Additional Info

ALTERNATE NAMES:	LAT, p36-38, Pp36, LAT1
ACCESSION NO.:	O43561
PROTEIN GI NO.:	14194891
OFFICIAL SYMBOL:	LAT
GENE ID:	27040

Background

FOR RESEARCH USE ONLY

