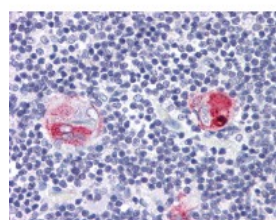




CD1B Antibody [SN13/K5-1B8]

CATALOG NUMBER: 51-336



Immunohistochemistry of human thymus
tissue stained using CD1B Monoclonal
Antibody.

Specifications

SPECIES REACTIVITY:	Human
TESTED APPLICATIONS:	FACS, IHC
APPLICATIONS:	CD1B antibody can be used in ELISA starting at 1:50 - 1:100, immunohistochemistry starting at 5 ug/mL, and immunofluorescence.
USER NOTE:	Optimal dilutions for each application to be determined by the researcher.
IMMUNOGEN:	Human CD1b
HOST SPECIES:	Mouse

Properties

PURIFICATION:	Affinity Purified
PHYSICAL STATE:	Liquid
BUFFER:	PBS, pH 7.2, <=0.09% sodium azide
STORAGE CONDITIONS:	Store CD1B antibody at 4 °C. As with all antibodies avoid freeze/thaw cycles
CLONALITY:	Monoclonal
ISOTYPE:	IgG1
CONJUGATE:	Unconjugated

Additional Info

ALTERNATE NAMES:	CD1B, CD1, CD1b molecule, CD1b antigen, CD1B antigen, b polypeptide
ACCESSION NO.:	P29016
PROTEIN GI NO.:	115962
OFFICIAL SYMBOL:	CD1B
GENE ID:	910

Background

