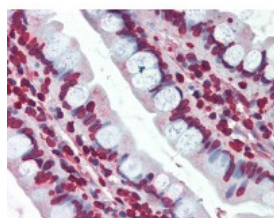




EPHA2 Antibody [1B3C7]

CATALOG NUMBER: 51-325



Immunohistochemistry of human small intestine tissue stained using EPHA2 Monoclonal Antibody.

Specifications

SPECIES REACTIVITY:	Human
TESTED APPLICATIONS:	ELISA, IHC, WB
APPLICATIONS:	EPHA2 antibody can be used in ELISA starting at 1:000 - 1:1000, and immunohistochemistry starting at 10 ug/mL.
USER NOTE:	Optimal dilutions for each application to be determined by the researcher.
IMMUNOGEN:	Purified recombinant fragment of EphA2 expressed in E. Coli.
HOST SPECIES:	Mouse

Properties

PURIFICATION:	Ascites
PHYSICAL STATE:	Liquid
BUFFER:	0.03% sodium azide
STORAGE CONDITIONS:	EPHA2 antibody should be stored long term (months) at -20 °C and short term (weeks) at 4 °C. As with all antibodies avoid freeze/thaw cycles.
CLONALITY:	Monoclonal
ISOTYPE:	IgM
CONJUGATE:	Unconjugated

Additional Info

ALTERNATE NAMES:	EPHA2, CTPA, EPH receptor A2, Ephrin type-A receptor 2, Epithelial cell kinase, ECK, Sek-2, ARCC2, Soluble EPHA2 variant 1, CTPP1
ACCESSION NO.:	P29317
PROTEIN GI NO.:	229462861
OFFICIAL SYMBOL:	EPHA2
GENE ID:	1969

