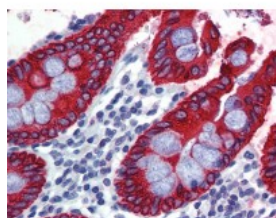




Cytokeratin Antibody [7H8]

CATALOG NUMBER: 51-323



Immunohistochemistry of human colon tissue stained using Cytokeratin Monoclonal Antibody.

Specifications

SPECIES REACTIVITY:	Human
TESTED APPLICATIONS:	ELISA, IF, IHC
APPLICATIONS:	Cytokeratin antibody can be used in ELISA starting at 1:1000 - 1:10000, and immunohistochemistry starting at 10 ug/mL.
USER NOTE:	Optimal dilutions for each application to be determined by the researcher.
IMMUNOGEN:	Purified recombinant fragment of Cytokeratin 5 expressed in E. Coli.
HOST SPECIES:	Mouse

Properties

PURIFICATION:	Ascites
PHYSICAL STATE:	Liquid
BUFFER:	0.03% sodium azide
STORAGE CONDITIONS:	Cytokeratin antibody should be stored long term (months) at -20 °C and short term (weeks) at 4 °C. As with all antibodies avoid freeze/thaw cycles.
CLONALITY:	Monoclonal
ISOTYPE:	IgG1
CONJUGATE:	Unconjugated

Additional Info

ALTERNATE NAMES:	KRT2B, KRT2P, Keratin, type II cytoskeletal 2 oral, Cytokeratin-2P, CK-2P, HUMCYT2A
ACCESSION NO.:	Q01546
PROTEIN GI NO.:	317373371
OFFICIAL SYMBOL:	KRT76
GENE ID:	51350

Background

