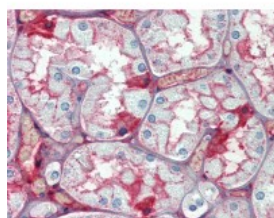




Albumin Antibody [2H3D1;8F6F9]

CATALOG NUMBER: 51-322



Immunohistochemistry of human kidney tissue stained using Albumin Monoclonal Antibody.

Specifications

SPECIES REACTIVITY:	Human
TESTED APPLICATIONS:	ELISA, IHC, WB
APPLICATIONS:	Albumin antibody can be used in ELISA starting at 1:000 - 1:1000, and immunohistochemistry starting at 10 ug/mL.
USER NOTE:	Optimal dilutions for each application to be determined by the researcher.
IMMUNOGEN:	Purified Human serum albumin.
HOST SPECIES:	Mouse

Properties

PURIFICATION:	Ascites
PHYSICAL STATE:	Liquid
BUFFER:	0.03% sodium azide
STORAGE CONDITIONS:	Albumin antibody should be stored long term (months) at -20 °C and short term (weeks) at 4 °C. As with all antibodies avoid freeze/thaw cycles.
CLONALITY:	Monoclonal
ISOTYPE:	IgG1
CONJUGATE:	Unconjugated

Additional Info

ALTERNATE NAMES:	ALB, Albumin (32 AA), Albumin (AA 34), Albumin, Growth-inhibiting protein 20, PRO1341, PRO0883, Serum albumin, PRO0903
ACCESSION NO.:	P02768
PROTEIN GI NO.:	113576
OFFICIAL SYMBOL:	ALB
GENE ID:	213

FOR RESEARCH USE ONLY

December 13, 2016