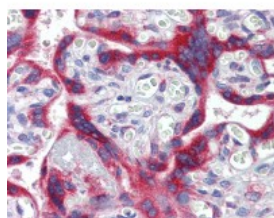




ERBB3 Antibody [3F10F6]

CATALOG NUMBER: 51-318



Immunohistochemistry of human placenta tissue stained using ERBB3 Monoclonal Antibody.

Specifications

SPECIES REACTIVITY:	Human
TESTED APPLICATIONS:	ELISA, IHC, WB
APPLICATIONS:	ERBB3 antibody can be used in ELISA starting at 1:000 - 1:1000, and immunohistochemistry starting at 10 ug/mL.
USER NOTE:	Optimal dilutions for each application to be determined by the researcher.
IMMUNOGEN:	Recombinant protein encoding amino acids 1175 to 1275 of human ERBB3.
HOST SPECIES:	Mouse

Properties

PURIFICATION:	Ascites
PHYSICAL STATE:	Liquid
BUFFER:	0.03% sodium azide
STORAGE CONDITIONS:	ERBB3 antibody should be stored long term (months) at -20 °C and short term (weeks) at 4 °C. As with all antibodies avoid freeze/thaw cycles.
CLONALITY:	Monoclonal
ISOTYPE:	IgG1
CONJUGATE:	Unconjugated

Additional Info

ALTERNATE NAMES:	ERBB3, C-erbB-3, C-erbB3, ErbB-3, HER3, p85-sErbB3, p45-sErbB3, MDA-BF-1, ErbB3-S, LCCS2, p180-ErbB3
ACCESSION NO.:	P21860
PROTEIN GI NO.:	119534
OFFICIAL SYMBOL:	ERBB3
GENE ID:	2065

