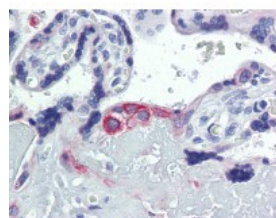




Cytokeratin Antibody [5D12]

CATALOG NUMBER: 51-311



Immunohistochemistry of human placenta tissue stained using Cytokeratin Monoclonal Antibody.

Specifications

SPECIES REACTIVITY:	Human
TESTED APPLICATIONS:	ELISA, FACS, IHC, WB
APPLICATIONS:	Cytokeratin antibody can be used in ELISA starting at 1:1000 - 1:10000, and immunohistochemistry starting at 10 ug/mL.
USER NOTE:	Optimal dilutions for each application to be determined by the researcher.
IMMUNOGEN:	Purified recombinant fragment of human CK7 expressed in E. Coli.
HOST SPECIES:	Mouse

Properties

PURIFICATION:	Ascites
PHYSICAL STATE:	Liquid
BUFFER:	0.03% sodium azide
STORAGE CONDITIONS:	Cytokeratin antibody should be stored long term (months) at -20 °C and short term (weeks) at 4 °C. As with all antibodies avoid freeze/thaw cycles.
CLONALITY:	Monoclonal
ISOTYPE:	IgG1
CONJUGATE:	Unconjugated

Additional Info

ALTERNATE NAMES:	KRT7, CK-7, Cytokeratin 7, CK7, K2C7, K7, Keratin 7, Keratin-7, SCL, Type II mesothelial keratin K7, Cytokeratin-7, Sarcolectin, Type-II keratin Kb7
ACCESSION NO.:	P08729
PROTEIN GI NO.:	317373583
OFFICIAL SYMBOL:	KRT7
GENE ID:	3855

