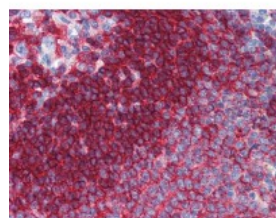




CD37 Antibody [2B8]

CATALOG NUMBER: 51-309



Immunohistochemistry of human spleen tissue stained using CD37 Monoclonal Antibody.

Specifications

SPECIES REACTIVITY:	Human, Mouse
TESTED APPLICATIONS:	ELISA, IF, IHC
APPLICATIONS:	CD37 antibody can be used in ELISA starting at 1:1000, and immunohistochemistry starting at 10 ug/mL.
USER NOTE:	Optimal dilutions for each application to be determined by the researcher.
IMMUNOGEN:	Purified recombinant fragment of CD37 expressed in E. Coli.
HOST SPECIES:	Mouse

Properties

PURIFICATION:	Ascites
PHYSICAL STATE:	Liquid
BUFFER:	0.03% sodium azide
STORAGE CONDITIONS:	CD37 antibody should be stored long term (months) at -20 °C and short term (weeks) at 4 °C. As with all antibodies avoid freeze/thaw cycles.
CLONALITY:	Monoclonal
ISOTYPE:	IgG1
CONJUGATE:	Unconjugated

Additional Info

ALTERNATE NAMES:	CD37, CD37 antigen, CD37 molecule, Leukocyte surface antigen CD37, gp52-40, TSPAN26, Leukocyte antigen CD37, Tetraspanin-26, Tspan-26
ACCESSION NO.:	P11049
PROTEIN GI NO.:	115983
OFFICIAL SYMBOL:	CD37
GENE ID:	951

Background

