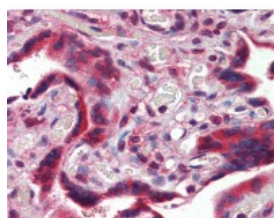




## Calnexin Antibody [3H4A7]

CATALOG NUMBER: 51-308



Immunohistochemistry of human placenta tissue stained using Calnexin Monoclonal Antibody.

### Specifications

<b>SPECIES REACTIVITY:</b>	Bovine, Gibbon, Gorilla, Hamster, Horse, Human, Monkey, Mouse, Orangutan, Pig, Rabbit, Rat
<b>TESTED APPLICATIONS:</b>	ELISA, IF, IHC, WB
<b>APPLICATIONS:</b>	Calnexin antibody can be used in ELISA starting at 1:000 - 1:1000, and immunohistochemistry starting at 5 ug/mL.
<b>USER NOTE:</b>	Optimal dilutions for each application to be determined by the researcher.
<b>IMMUNOGEN:</b>	Synthetic peptide corresponding to aa of human Calnexin, conjugated to KLH.
<b>HOST SPECIES:</b>	Mouse

### Properties

<b>PURIFICATION:</b>	Ascites
<b>PHYSICAL STATE:</b>	Liquid
<b>BUFFER:</b>	0.03% sodium azide
<b>STORAGE CONDITIONS:</b>	Calnexin antibody should be stored long term (months) at -20 °C and short term (weeks) at 4 °C. As with all antibodies avoid freeze/thaw cycles.
<b>CLONALITY:</b>	Monoclonal
<b>ISOTYPE:</b>	IgG2b
<b>CONJUGATE:</b>	Unconjugated

### Additional Info

<b>ALTERNATE NAMES:</b>	CANX, CNX, Calnexin, IP90, p90
<b>ACCESSION NO.:</b>	P27824
<b>PROTEIN GI NO.:</b>	543920
<b>OFFICIAL SYMBOL:</b>	CANX
<b>GENE ID:</b>	821

### Background

