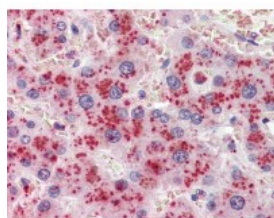




ALCAM Antibody [10F1G12]

CATALOG NUMBER: 51-305



Immunohistochemistry of human liver tissue stained using ALCAM Monoclonal Antibody.

Specifications

SPECIES REACTIVITY:	Human
TESTED APPLICATIONS:	ELISA, IHC
APPLICATIONS:	ALCAM antibody can be used in ELISA starting at 1:000 - 1:1000, and immunohistochemistry starting at 10 ug/mL.
USER NOTE:	Optimal dilutions for each application to be determined by the researcher.
IMMUNOGEN:	Purified recombinant fragment of ALCAM (aa405-524) expressed in E. Coli.
HOST SPECIES:	Mouse

Properties

PURIFICATION:	Ascites
PHYSICAL STATE:	Liquid
BUFFER:	0.03% sodium azide
STORAGE CONDITIONS:	ALCAM antibody should be stored long term (months) at -20 °C and short term (weeks) at 4 °C. As with all antibodies avoid freeze/thaw cycles.
CLONALITY:	Monoclonal
ISOTYPE:	IgG1
CONJUGATE:	Unconjugated

Additional Info

ALTERNATE NAMES:	ALCAM, CD166 antigen, MEMD, CD166
ACCESSION NO.:	Q13740
PROTEIN GI NO.:	118572629
OFFICIAL SYMBOL:	ALCAM
GENE ID:	214

Background

