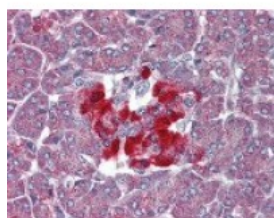




TAAR8 Antibody

CATALOG NUMBER: 51-251



Immunohistochemistry staining of TAAR8
in pancreas tissue using TAAR8 Antibody.

Specifications

SPECIES REACTIVITY:	Gorilla, Human
TESTED APPLICATIONS:	ELISA, IHC
APPLICATIONS:	TAAR8 antibody can be used in immunohistochemistry starting at 10 ug/mL.
USER NOTE:	Optimal dilutions for each application to be determined by the researcher.
SPECIFICITY:	BLAST analysis of the peptide immunogen showed no homology with other human proteins.
IMMUNOGEN:	TAAR8 antibody was raised against amino acids from the C-Terminal domain of TAAR8 (Human).
HOST SPECIES:	Rabbit

Properties

PURIFICATION:	Immunoaffinity Chromatography
PHYSICAL STATE:	Liquid
BUFFER:	PBS, 0.1% sodium azide.
STORAGE CONDITIONS:	TAAR8 antibody should be stored long term (months) at -80 °C and short term (days) at 4 °C. As with all antibodies avoid freeze/thaw cycles.
CLONALITY:	Polyclonal
CONJUGATE:	Unconjugated

Additional Info

ALTERNATE NAMES:	TAAR8, G-protein coupled receptor 102, GPR102, G protein-coupled receptor 102, TA5, TaR-8, Trace amine receptor 5, TaR-5, TAR5, Trace amine receptor 8, TRAR5
ACCESSION NO.:	Q969N4
PROTEIN GI NO.:	38258876
OFFICIAL SYMBOL:	TAAR8
GENE ID:	83551

Background

