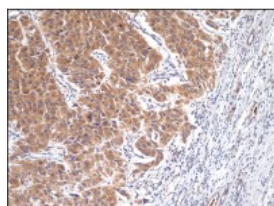




## LY75 Antibody

CATALOG NUMBER: 51-093



Immunohistochemistry staining of LY75 in human renal cell carcinoma (4 microns) tissue using LY75 Antibody.

### Specifications

<b>SPECIES REACTIVITY:</b>	Human
<b>TESTED APPLICATIONS:</b>	IHC
<b>APPLICATIONS:</b>	LY75 antibody can be used in ELISA, Western Blot, immunohistochemistry starting at 5 ug/mL, and immunofluorescence starting at 30 ug/mL.
<b>USER NOTE:</b>	Optimal dilutions for each application to be determined by the researcher.
<b>IMMUNOGEN:</b>	LY75 antibody was raised against a synthetic peptide derived from C-Terminal sequence of human LY75 (Human).
<b>HOST SPECIES:</b>	Rabbit

### Properties

<b>PURIFICATION:</b>	Purified
<b>PHYSICAL STATE:</b>	Liquid
<b>BUFFER:</b>	20 mM Tris-HCl, pH 8.0, 20 mg/mL BSA, 0.05% sodium azide
<b>STORAGE CONDITIONS:</b>	Store LY75 antibody at -20 °C. Aliquot to avoid freeze/thaw cycles.
<b>CLONALITY:</b>	Polyclonal
<b>CONJUGATE:</b>	Unconjugated

### Additional Info

<b>ALTERNATE NAMES:</b>	LY75, CD205, CLEC13B, CD205 antigen, LY-75, Lymphocyte antigen 75, DEC-205, gp200-MR6
<b>ACCESSION NO.:</b>	O60449
<b>PROTEIN GI NO.:</b>	317373426
<b>OFFICIAL SYMBOL:</b>	LY75
<b>GENE ID:</b>	4065

### Background

FOR RESEARCH USE ONLY

