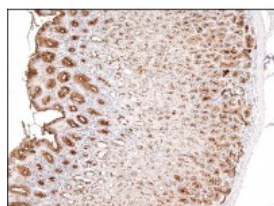




Mucin 1 Antibody

CATALOG NUMBER: 51-090



Immunohistochemistry staining of Mucin 1
in human stomach tissue (4 microns)
tissue using Mucin 1 Antibody.

Specifications

SPECIES REACTIVITY:	Human
TESTED APPLICATIONS:	IHC
APPLICATIONS:	Mucin 1 antibody can be used in ELISA, Western Blot, immunohistochemistry starting at 5 ug/mL, and immunofluorescence starting at 10 ug/mL.
USER NOTE:	Optimal dilutions for each application to be determined by the researcher.
IMMUNOGEN:	Mucin 1 antibody was raised against a synthetic peptide derived from C-Terminal sequence of human Mucin 1 (Human).
HOST SPECIES:	Rabbit

Properties

PURIFICATION:	Purified
PHYSICAL STATE:	Liquid
BUFFER:	20 mM Tris-HCl, pH 8.0, 20 mg/mL BSA, 0.05% sodium azide
STORAGE CONDITIONS:	Store Mucin 1 antibody at -20 °C. Aliquot to avoid freeze/thaw cycles.
CLONALITY:	Polyclonal
CONJUGATE:	Unconjugated

Additional Info

ALTERNATE NAMES:	MUC1, CA15-3, CD227, Carcinoma-associated mucin, CD227 antigen, DF3 antigen, Episialin, Epithelial membrane antigen, H23 antigen, H23AG, Krebs von den Lungen-6, MAM6, MUC1/ZD, MUC-1/SEC, Mucin-1, Pem, KL-6, MUC-1/X, Tumor-associated mucin, Peanut-reactive urinary mucin, Polymorphic epithelial mucin, PUM, EMA, MUC-1, Mucin 1, transmembrane
ACCESSION NO.:	P15941
PROTEIN GI NO.:	296439295
OFFICIAL SYMBOL:	MUC1
GENE ID:	4582

