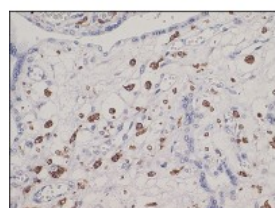




CD163 Antibody

CATALOG NUMBER: 51-085



Immunohistochemistry staining of CD163
in human placenta (4 microns) tissue using
CD163 Antibody.

Specifications

SPECIES REACTIVITY:	Human
TESTED APPLICATIONS:	IHC
APPLICATIONS:	CD163 antibody can be used in ELISA, Western Blot, and immunohistochemistry starting at 5 ug/mL.
USER NOTE:	Optimal dilutions for each application to be determined by the researcher.
IMMUNOGEN:	CD163 antibody was raised against amino acids from the C-Terminus of CD163 (Human).
HOST SPECIES:	Rabbit

Properties

PURIFICATION:	Purified
PHYSICAL STATE:	Liquid
BUFFER:	20 mM Tris-HCl, pH 8.0, 20 mg/mL BSA, 0.05% sodium azide
STORAGE CONDITIONS:	Store CD163 antibody at 4 °C or -20 °C. As with all antibodies avoid freeze/thaw cycles.
CLONALITY:	Polyclonal
CONJUGATE:	Unconjugated

Additional Info

ALTERNATE NAMES:	CD163, CD163 antigen, Macrophage-associated antigen, M130, CD163 molecule, Hemoglobin scavenger receptor, MM130
ACCESSION NO.:	Q86VB7
PROTEIN GI NO.:	313104083
OFFICIAL SYMBOL:	CD163
GENE ID:	9332

Background

FOR RESEARCH USE ONLY

