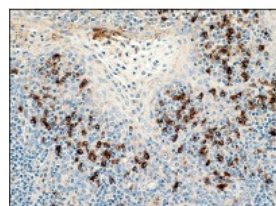




## Immunoglobulin Lambda Light Chain Antibody

CATALOG NUMBER: 51-081



Immunohistochemistry staining of  
Immunoglobulin Lambda Light Chain in  
human tonsil tissue (4 microns) tissue  
using Immunoglobulin Lambda Light Chain  
Antibody.

### Specifications

<b>SPECIES REACTIVITY:</b>	Human
<b>TESTED APPLICATIONS:</b>	IHC
<b>APPLICATIONS:</b>	Immunoglobulin Lambda Light Chain antibody can be used in ELISA, Western Blot, immunohistochemistry starting at 5 ug/mL, and immunofluorescence starting at 10 ug/mL.
<b>USER NOTE:</b>	Optimal dilutions for each application to be determined by the researcher.
<b>IMMUNOGEN:</b>	Immunoglobulin Lambda Light Chain antibody was raised against a synthetic peptide derived from N-Terminal sequence of human immunoglobulin lambda light chain (Human).
<b>HOST SPECIES:</b>	Rabbit

### Properties

<b>PURIFICATION:</b>	Purified
<b>PHYSICAL STATE:</b>	Liquid
<b>BUFFER:</b>	20 mM Tris-HCl, pH 8.0, 20 mg/mL BSA, 0.05% sodium azide
<b>STORAGE CONDITIONS:</b>	Store Immunoglobulin Lambda Light Chain antibody at -20 °C. Aliquot to avoid freeze/thaw cycles.
<b>CLONALITY:</b>	Polyclonal
<b>CONJUGATE:</b>	Unconjugated

### Additional Info

<b>ALTERNATE NAMES:</b>	Lambda light chain of human immunoglobulin surface antigen-related protein, IgLC-rG
<b>ACCESSION NO.:</b>	BAH86638.1
<b>PROTEIN GI NO.:</b>	254892261
<b>OFFICIAL SYMBOL:</b>	CYAT1
<b>GENE ID:</b>	100290481

### Background

