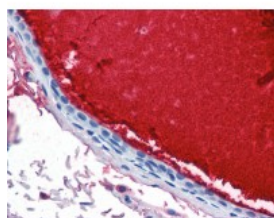




Lactotransferrin Antibody [1A1]

CATALOG NUMBER: 51-073



Immunohistochemistry staining of Lactotransferrin in breast, ductal with secretion tissue using Lactotransferrin monoclonal Antibody.

Specifications

SPECIES REACTIVITY:	Human
TESTED APPLICATIONS:	ELISA, IHC, WB
APPLICATIONS:	Lactotransferrin antibody can be used in immunohistochemistry starting at 10 ug/mL.
USER NOTE:	Optimal dilutions for each application to be determined by the researcher.
SPECIFICITY:	Recognizes human lactoferrin, a 78kD globular protein found in body secretions such as milk and saliva and is a member of the transferrin family proteins. T
IMMUNOGEN:	Lactotransferrin monoclonal antibody was raised against purified lactoferrin from human milk (Human).
HOST SPECIES:	Mouse

Properties

PURIFICATION:	Affinity Chromatography
PHYSICAL STATE:	Liquid
BUFFER:	PBS, pH 7.4, 0.09% sodium azide.
STORAGE CONDITIONS:	Store Lactotransferrin antibody at 4 °C or -20 °C. As with all antibodies avoid freeze/thaw cycles.
CLONALITY:	Monoclonal
ISOTYPE:	IgG1
CONJUGATE:	Unconjugated

Additional Info

ALTERNATE NAMES:	LTF, GIG12, Growth-inhibiting protein 12, HLF2, Lactotransferrin, Lactoferrin, LF, Neutrophil lactoferrin, Talalactoferrin
ACCESSION NO.:	P02788
PROTEIN GI NO.:	85700158
OFFICIAL SYMBOL:	LTF
GENE ID:	4057

