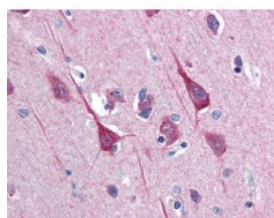




DISC1 Antibody

CATALOG NUMBER: 51-067



Immunohistochemistry staining of DISC1
in brain cortex tissue using DISC1
Antibody.

Specifications

SPECIES REACTIVITY:	Human
TESTED APPLICATIONS:	ELISA, IHC, WB
APPLICATIONS:	DISC1 antibody can be used in immunohistochemistry starting at 2.5 ug/mL.
USER NOTE:	Optimal dilutions for each application to be determined by the researcher.
IMMUNOGEN:	DISC1 antibody was raised against amino acids from the C-Terminus of DISC1 (Human).
HOST SPECIES:	Rabbit

Properties

PURIFICATION:	Immunoaffinity Chromatography
PHYSICAL STATE:	Liquid
BUFFER:	PBS, 0.01% sodium azide, 50% glycerol.
STORAGE CONDITIONS:	Store DISC1 antibody at 4 °C or -20 °C. As with all antibodies avoid freeze/thaw cycles.
CLONALITY:	Polyclonal
CONJUGATE:	Unconjugated

Additional Info

ALTERNATE NAMES:	DISC1, C1orf136, Disrupted in schizophrenia 1, KIAA0457, SCZD9
ACCESSION NO.:	Q9NRI5
PROTEIN GI NO.:	160332362
OFFICIAL SYMBOL:	DISC1
GENE ID:	27185

Background

FOR RESEARCH USE ONLY

