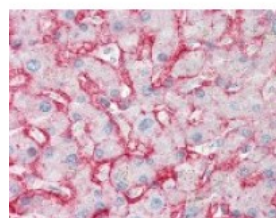




SLC2A2 Antibody, Monoclonal

CATALOG NUMBER: 49-922



Immunohistochemistry staining of SLC2A2
in liver tissue using SLC2A2 Monoclonal
Antibody.

Specifications

SPECIES REACTIVITY:	Human
TESTED APPLICATIONS:	FACS, ICC, IHC
APPLICATIONS:	SLC2A2 antibody can be used in ELISA, Western Blot starting at 1 - 2 ug/mL, immunohistochemistry starting at 5 ug/mL, immunofluorescence, and immunoprecipitation.
USER NOTE:	Optimal dilutions for each application to be determined by the researcher.
SPECIFICITY:	Recognizes human GLUT 2 (Glucose Transporter, Insulin Regulatable) expression on hGlut2-transfected NS0 cells but not on control transfectants. Detects Glut2 on the surface of the human intestinal cell line.
IMMUNOGEN:	SLC2A2 monoclonal antibody was raised against glut2 - transfected NS0 cells (Human).
HOST SPECIES:	Mouse

Properties

PURIFICATION:	Protein G Column
PHYSICAL STATE:	Liquid
BUFFER:	PBS, 5% Trehalose
STORAGE CONDITIONS:	Store SLC2A2 antibody at 4 °C or -20 °C. As with all antibodies avoid freeze/thaw cycles.
CLONALITY:	Monoclonal
ISOTYPE:	IgG2a
CONJUGATE:	Unconjugated

Additional Info

ALTERNATE NAMES:	SLC2A2, GLUT-2, GLUT2, Glucose transporter 2
ACCESSION NO.:	P11168
PROTEIN GI NO.:	121756
OFFICIAL SYMBOL:	SLC2A2
GENE ID:	6514

Background

BACKGROUND:

Glut2 belongs to the facilitative glucose transporter protein family that comprises 13 members. It is an integral membrane protein with 12 transmembrane domains. Glut2 is expressed predominantly in liver, intestine, kidney, and pancreatic beta-cells. It is a low-affinity glucose transporter that has been suggested to function as a glucose sensor in pancreatic beta-cells and facilitate either glucose uptake or efflux from cells depending on the nutritional state.¹ Suitable for use in Flow Cytometry and Immunohistochemistry. Other applications not tested. Recognizes human GLUT 2 (Glucose Transporter, Insulin Regulatable) expression on hGlut2-transfected NS0 cells but not on control transfectants. Detects Glut2 on the surface of the human intestinal cell line Caco2 in flow cytometry and on fixed cells in immunocytochemistry tests. Based on flow cytometric tests on transfected cells, this antibody has no crossreactivity with hGlut1 or hGlut3.

Glucose transporter 2 isoform is an integral plasma membrane glycoprotein of the liver, islet beta cells, intestine, and kidney epithelium. It mediates facilitated bidirectional glucose transport. Because of its low affinity for glucose, it has been suggested as a glucose sensor.

FOR RESEARCH USE ONLY

December 13, 2016