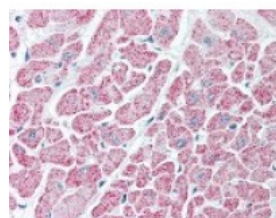




IDH1 Antibody

CATALOG NUMBER: 49-853



Immunohistochemistry staining of IDH1 in heart tissue using IDH1 Antibody.

Specifications

SPECIES REACTIVITY:	Broad, Human, Pig
TESTED APPLICATIONS:	ELISA, IHC, WB
APPLICATIONS:	IDH1 antibody can be used in immunohistochemistry starting at 2 - 4 ug/mL, and immunofluorescence.
USER NOTE:	Optimal dilutions for each application to be determined by the researcher.
SPECIFICITY:	Binds both Dehydroepiandrosterone (DHEA) and DHEAS, demonstrating minimal cross-reactivity with Progesterone and Testosterone. DHEA is the most abundant hormone in the human body and a precursor of all the sex hormones. It is synthesized principally ...
IMMUNOGEN:	IDH1 antibody was raised against purified IDH1 (Porcine).
HOST SPECIES:	Rabbit

Properties

PURIFICATION:	Affinity Chromatography
PHYSICAL STATE:	Liquid
BUFFER:	PBS, pH 7.2, 0.09% sodium azide.
STORAGE CONDITIONS:	Store IDH1 antibody at 4 °C or -20 °C. As with all antibodies avoid freeze/thaw cycles. Store undiluted.
CLONALITY:	Polyclonal
ISOTYPE:	IgG
CONJUGATE:	Unconjugated

Additional Info

ALTERNATE NAMES:	Isocitrate dehydrogenase [NADP] cytoplasmic, IDH, Cytosolic NADP-isocitrate dehydrogenase, IDP, NADP(+)-specific ICDH, Oxalosuccinate decarboxylase
ACCESSION NO.:	XP_005672200.1
PROTEIN GI NO.:	545875443
OFFICIAL SYMBOL:	IDH1
GENE ID:	100170146

FOR RESEARCH USE ONLY

December 13, 2016