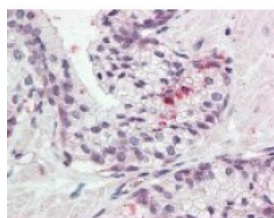




## Kallikrein 11 Antibody

CATALOG NUMBER: 49-842



Immunohistochemistry staining of  
Kallikrein 11 in prostate: formalin-fixed,  
paraffin-embedded (ffpe) Kallikrein 11  
Antibody.

### Specifications

<b>SPECIES REACTIVITY:</b>	Gorilla, Human
<b>TESTED APPLICATIONS:</b>	ELISA, IHC, WB
<b>APPLICATIONS:</b>	Kallikrein 11 antibody can be used in ELISA, and immunohistochemistry starting at 7 ug/mL.
<b>USER NOTE:</b>	Optimal dilutions for each application to be determined by the researcher.
<b>IMMUNOGEN:</b>	Kallikrein 11 antibody was raised against amino acids 68 - 82 of Kallikrein 11 (Human).
<b>HOST SPECIES:</b>	Rabbit

### Properties

<b>PURIFICATION:</b>	Immunoaffinity Chromatography
<b>PHYSICAL STATE:</b>	Liquid
<b>BUFFER:</b>	PBS, pH 7.2, 0.02% sodium azide.
<b>STORAGE CONDITIONS:</b>	Store Kallikrein 11 antibody at 4 °C or -20 °C. As with all antibodies avoid freeze/thaw cycles.
<b>CLONALITY:</b>	Polyclonal
<b>ISOTYPE:</b>	IgG
<b>CONJUGATE:</b>	Unconjugated

### Additional Info

<b>ALTERNATE NAMES:</b>	KLK11, Hippostasin, HK11, Kallikrein 11, Kallikrein-11, PRSS20, TLSP, Trypsin-like protease, Serine protease 20, Trypsin-like serine protease
<b>ACCESSION NO.:</b>	Q9UBX7
<b>PROTEIN GI NO.:</b>	88984315
<b>OFFICIAL SYMBOL:</b>	KLK11
<b>GENE ID:</b>	11012

### Background

**BACKGROUND:**

Hippostasin, also known as KLK11, is a kallikrein-like serine protease, which has two alternatively spliced isoforms, brain-type and prostate-type. Hippostasin plays a role in the prostate, including reproductive and/or tumorigenic functions. Elevated serum levels of hK11 were found in 70% of women with ovarian cancer and in 60% of men with prostate cancer. Analysis of the KLK11 biomarker in serum may aid in the diagnosis and monitoring of ovarian and prostatic carcinoma. Suitable for use ELISA and Western Blot. Other applications not tested. Recognizes the residues 68-82 [YIVHLGQHNLQKEEG] of the 35kD human hippostasin/KLK11 protein. Species sequence homology: mouse and rat.

---

**FOR RESEARCH USE ONLY**

December 13, 2016