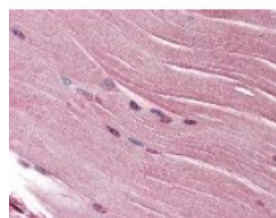




## SH3GLB1 Antibody

CATALOG NUMBER: 49-805



Immunohistochemistry staining of SH3GLB1 in skeletal muscle tissue using SH3GLB1 Antibody.

### Specifications

<b>SPECIES REACTIVITY:</b>	Human, Mouse, Rat
<b>TESTED APPLICATIONS:</b>	IHC, WB
<b>APPLICATIONS:</b>	SH3GLB1 antibody can be used in immunohistochemistry starting at 20 ug/mL.
<b>USER NOTE:</b>	Optimal dilutions for each application to be determined by the researcher.
<b>IMMUNOGEN:</b>	SH3GLB1 antibody was raised against a synthetic peptide surrounding amino acid 351 of SH3GLB1 (Human).
<b>HOST SPECIES:</b>	Rabbit

### Properties

<b>PURIFICATION:</b>	Protein A Column
<b>PHYSICAL STATE:</b>	Liquid
<b>BUFFER:</b>	PBS, pH 7.2, 50% glycerol, 1% BSA, 0.02% Thimerosal.
<b>STORAGE CONDITIONS:</b>	SH3GLB1 antibody should be stored long term (months) at -80 °C and short term (days) at -20 °C. As with all antibodies avoid freeze/thaw cycles.
<b>CLONALITY:</b>	Polyclonal
<b>CONJUGATE:</b>	Unconjugated

### Additional Info

<b>ALTERNATE NAMES:</b>	SH3GLB1, CGI-61, Endophilin B1, Endophilin-B1, PPP1R70, Bax-interacting factor 1, Bif-1, DJ612B15.2, KIAA0491, SH3-containing protein SH3GLB1
<b>ACCESSION NO.:</b>	Q9Y371
<b>PROTEIN GI NO.:</b>	41018158
<b>OFFICIAL SYMBOL:</b>	SH3GLB1
<b>GENE ID:</b>	51100

### Background

FOR RESEARCH USE ONLY

