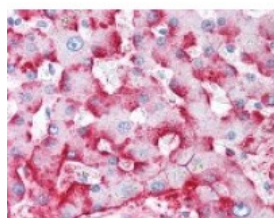




## C4BP Antibody [10-07]

CATALOG NUMBER: 49-802



Immunohistochemistry staining of C4BP in liver: formalin-fixed, paraffin-embedded (ffpe) C4BP Monoclonal Antibody.

### Specifications

<b>SPECIES REACTIVITY:</b>	Human
<b>TESTED APPLICATIONS:</b>	ELISA, IHC
<b>APPLICATIONS:</b>	C4BP antibody can be used in ELISA, and immunohistochemistry starting at 10 ug/mL.
<b>USER NOTE:</b>	Optimal dilutions for each application to be determined by the researcher.
<b>SPECIFICITY:</b>	There are three variants of C4bp, composed of alpha and beta chains. The predominant form is a 570 kD complex of 7 alpha chains and 1 beta chain.
<b>IMMUNOGEN:</b>	C4BP monoclonal antibody was raised against native C4BP (Human).
<b>HOST SPECIES:</b>	Mouse

### Properties

<b>PURIFICATION:</b>	Protein A Column
<b>PHYSICAL STATE:</b>	Liquid
<b>BUFFER:</b>	Borate buffered saline, pH 8.4, 0.02% sodium azide.
<b>STORAGE CONDITIONS:</b>	Store C4BP antibody at 4 °C or -20 °C. As with all antibodies avoid freeze/thaw cycles. <b>Store undiluted.</b>
<b>CLONALITY:</b>	Monoclonal
<b>ISOTYPE:</b>	IgG2b
<b>CONJUGATE:</b>	Unconjugated

### Additional Info

<b>ALTERNATE NAMES:</b>	C4BP, C4b-binding protein alpha chain, Proline-rich protein, C4bp, PRP
<b>ACCESSION NO.:</b>	P04003
<b>PROTEIN GI NO.:</b>	416733
<b>OFFICIAL SYMBOL:</b>	C4BPA
<b>GENE ID:</b>	722

### Background

**BACKGROUND:**

Recognises complement component 4 binding protein (C4bp). There are three variants of C4bp, composed of alpha and beta chains. The predominant form is a 570 kDa complex of 7 alpha chains and 1 beta chain. The other complexes formed are a 530 kDa homoheptamer of alpha chains or a 500 kDa complex of 6 alpha chains and 1 beta chain. C4bp regulates the activation of the classical complement pathway. It is a cofactor to the C3b/C4b inactivator, crucial to the proteolytic cleavage of C4b and important in cleavage of C3b. C4bp also regulates the C4bC2a complex (C3 convertase), accelerating its degradation by dissociating the complement fragment C2a. Both the C4bp alpha and beta chains interact with anticoagulant protein S and C4bp alpha binds protein S. C4bp is expressed in the blood serum.

---

**FOR RESEARCH USE ONLY**

December 13, 2016