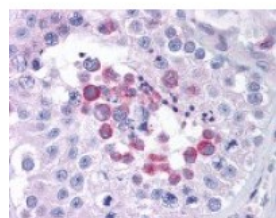




MAGEA3 Antibody

CATALOG NUMBER: 49-713



Immunohistochemistry staining of MAGEA3 in testis (formalin-fixed paraffin embedded) tissue using MAGEA3 Antibody.

Specifications

SPECIES REACTIVITY:	Human
TESTED APPLICATIONS:	ELISA, IHC
APPLICATIONS:	MAGEA3 antibody can be used in ELISA starting at 1:8000 - 1:32000, Western Blot starting at 1:500 - 1:2000, and immunohistochemistry starting at 20 ug/mL.
USER NOTE:	Optimal dilutions for each application to be determined by the researcher.
IMMUNOGEN:	Amino acids 298 to 314 of human MAGEA3
HOST SPECIES:	Rabbit

Properties

PURIFICATION:	Protein G Column
PHYSICAL STATE:	Liquid
BUFFER:	PBS, 0.09% sodium azide.
STORAGE CONDITIONS:	MAGEA3 antibody should be stored long term (months) at -20 °C and short term (weeks) at 4 °C. As with all antibodies avoid freeze/thaw cycles.
CLONALITY:	Polyclonal
CONJUGATE:	Unconjugated

Additional Info

ALTERNATE NAMES:	MAGEA3, Antigen MZ2-D, Cancer/testis antigen 1.3, CT1.3, HYPD, MAGE-3 antigen, Melanoma-associated antigen 3, HIP8, MAGE3, Melanoma antigen family A, 3
ACCESSION NO.:	P43357
PROTEIN GI NO.:	1170857
OFFICIAL SYMBOL:	MAGEA3
GENE ID:	4102

Background

