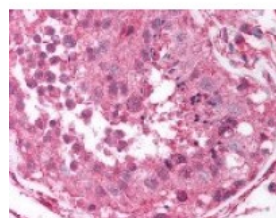




MAGEA1 Antibody

CATALOG NUMBER: 49-710



Immunohistochemistry staining of
MAGEA1 in testis tissue using MAGEA1
Antibody.

Specifications

SPECIES REACTIVITY:	Human
TESTED APPLICATIONS:	ELISA, IHC
APPLICATIONS:	MAGEA1 antibody can be used in ELISA starting at 1:10000 - 1:40000, Western Blot starting at 1:500 - 1:2000, and immunohistochemistry starting at 2.5 ug/mL.
USER NOTE:	Optimal dilutions for each application to be determined by the researcher.
IMMUNOGEN:	Amino acids 158 to 174 of human MAGEA1
HOST SPECIES:	Rabbit

Properties

PURIFICATION:	Protein G Column
PHYSICAL STATE:	Liquid
BUFFER:	PBS, 0.1% sodium azide.
STORAGE CONDITIONS:	MAGEA1 antibody should be stored long term (months) at -20 °C and short term (weeks) at 4 °C. As with all antibodies avoid freeze/thaw cycles.
CLONALITY:	Polyclonal
CONJUGATE:	Unconjugated

Additional Info

ALTERNATE NAMES:	MAGEA1, Antigen MZ2-E, Cancer/testis antigen 1.1, CT1.1, MAGE-1 antigen, MAGE1A, Melanoma antigen family A 1, Melanoma antigen MAGE-1, MAGE 1, MAGE1, Melanoma-associated antigen 1
ACCESSION NO.:	P43355
PROTEIN GI NO.:	1170855
OFFICIAL SYMBOL:	MAGEA1
GENE ID:	4100

Background

BACKGROUND:

MAGE was originally isolated from human melanoma cells as an antigen that is recognized by cytolytic T lymphocytes. It has since been documented in other carcinomas. In addition, expression has been documented in highly proliferating germ cells.

FOR RESEARCH USE ONLY

December 13, 2016