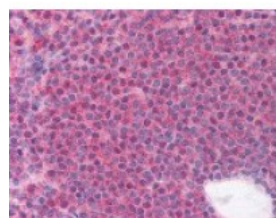




LRRC3B Antibody

CATALOG NUMBER: 49-709



Immunohistochemistry staining of
LRRC3B in spleen tissue using LRRC3B
Antibody.

Specifications

SPECIES REACTIVITY:	Human
TESTED APPLICATIONS:	ELISA, IHC
APPLICATIONS:	LRRC3B antibody can be used in ELISA starting at 1:15000 - 1:60000, Western Blot starting at 1:500 - 1:2000, immunohistochemistry starting at 5 ug/mL, and immunofluorescence.
USER NOTE:	Optimal dilutions for each application to be determined by the researcher.
IMMUNOGEN:	Amino acids 245 to 259 of human LRRC3B
HOST SPECIES:	Rabbit

Properties

PURIFICATION:	Protein G Column
PHYSICAL STATE:	Liquid
BUFFER:	PBS, 0.1% sodium azide.
STORAGE CONDITIONS:	LRRC3B antibody should be stored long term (months) at -20 °C and short term (weeks) at 4 °C. As with all antibodies avoid freeze/thaw cycles.
CLONALITY:	Polyclonal
CONJUGATE:	Unconjugated

Additional Info

ALTERNATE NAMES:	LRRC3B, LRP15
ACCESSION NO.:	Q96PB8
PROTEIN GI NO.:	24211927
OFFICIAL SYMBOL:	LRRC3B
GENE ID:	116135

Background

FOR RESEARCH USE ONLY

