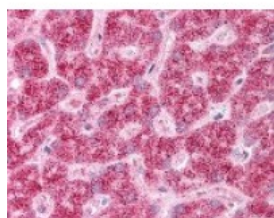




Leptin Receptor Antibody

CATALOG NUMBER: 49-707



Immunohistochemistry staining of Leptin receptor in liver tissue using Leptin receptor Antibody.

Specifications

SPECIES REACTIVITY:	Human
TESTED APPLICATIONS:	ELISA, IHC
APPLICATIONS:	Leptin Receptor antibody can be used in ELISA starting at 1:2000 - 1:10000, Western Blot starting at 1:500 - 1:2000, immunohistochemistry starting at 2.5 ug/mL, and immunoprecipitation
USER NOTE:	Optimal dilutions for each application to be determined by the researcher.
IMMUNOGEN:	Amino acids 37 to 52 of human LEPR
HOST SPECIES:	Rabbit

Properties

PURIFICATION:	Protein G Column
PHYSICAL STATE:	Liquid
BUFFER:	PBS, 0.09% sodium azide.
STORAGE CONDITIONS:	Leptin Receptor antibody should be stored long term (months) at -20 °C and short term (weeks) at 4 °C. As with all antibodies avoid freeze/thaw cycles.
CLONALITY:	Polyclonal
CONJUGATE:	Unconjugated

Additional Info

ALTERNATE NAMES:	LEPR, CD295 antigen, HuB219, LEP-R, OB receptor, LEPRD, OB-R, OBR, CD295, DB, Leptin receptor
ACCESSION NO.:	P48357
PROTEIN GI NO.:	116242617
OFFICIAL SYMBOL:	LEPR
GENE ID:	3953

Background

FOR RESEARCH USE ONLY

