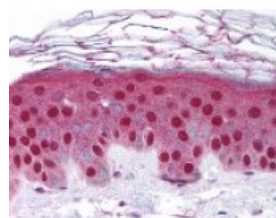




## MMP10 Antibody

CATALOG NUMBER: 49-703



Immunohistochemistry staining of MMP10  
in skin tissue using MMP10 Antibody.

### Specifications

<b>SPECIES REACTIVITY:</b>	Human
<b>TESTED APPLICATIONS:</b>	ELISA, IHC
<b>APPLICATIONS:</b>	MMP10 antibody can be used in ELISA, immunofluorescence, and immunohistochemistry starting at 2.5 ug/mL.
<b>USER NOTE:</b>	Optimal dilutions for each application to be determined by the researcher.
<b>IMMUNOGEN:</b>	Amino acids 409 to 424 of human MMP10
<b>HOST SPECIES:</b>	Rabbit

### Properties

<b>PURIFICATION:</b>	Protein G Column
<b>PHYSICAL STATE:</b>	Liquid
<b>BUFFER:</b>	PBS, 0.09% sodium azide.
<b>STORAGE CONDITIONS:</b>	MMP10 antibody should be stored long term (months) at -20 °C and short term (weeks) at 4 °C. As with all antibodies avoid freeze/thaw cycles.
<b>CLONALITY:</b>	Polyclonal
<b>CONJUGATE:</b>	Unconjugated

### Additional Info

<b>ALTERNATE NAMES:</b>	MMP10, Matrix metalloproteinase-10, SL-2, STMY2, Stromelysin 2, Stromelysin-2, MMP-10, Transin 2, Transin-2, Stromelysin2, Matrix metalloprotease 10
<b>ACCESSION NO.:</b>	P09238
<b>PROTEIN GI NO.:</b>	116869
<b>OFFICIAL SYMBOL:</b>	MMP10
<b>GENE ID:</b>	4319

### Background

**BACKGROUND:** MMP10 is a Metalloproteinase M10A type protease. Stromelysin2/MMP10 is a member of a gene family of metalloproteinases involved in extracellular matrix remodeling in normal and diseased processes. It degrades

collagen and many non-collagenous components of the extracellular matrix including fibronectin, gelatins of type I, III, IV, and V and may play a role in the activation of latent procollagenase.

---

**FOR RESEARCH USE ONLY**

December 13, 2016