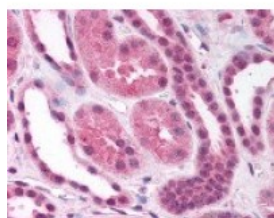




FOXO4 Antibody

CATALOG NUMBER: 49-702



Immunohistochemistry staining of FOXO4
in kidney tissue using FOXO4 Antibody.

Specifications

SPECIES REACTIVITY:	Human
TESTED APPLICATIONS:	ELISA, IHC
APPLICATIONS:	FOXO4 antibody can be used in ELISA starting at 1:20000 - 1:100000, Western Blot starting at 1:500 - 1:2000, and immunohistochemistry starting at 1:500.
USER NOTE:	Optimal dilutions for each application to be determined by the researcher.
IMMUNOGEN:	Amino acids 59 to 73 of human FOXO4
HOST SPECIES:	Rabbit

Properties

PURIFICATION:	Protein G Column
PHYSICAL STATE:	Liquid
BUFFER:	PBS, 0.1% sodium azide.
STORAGE CONDITIONS:	FOXO4 antibody should be stored long term (months) at -20 °C and short term (weeks) at 4 °C. As with all antibodies avoid freeze/thaw cycles.
CLONALITY:	Polyclonal
CONJUGATE:	Unconjugated

Additional Info

ALTERNATE NAMES:	FOXO4, AFX, AFX1, Forkhead box O4, Forkhead box protein O4, MLLT7
ACCESSION NO.:	P98177
PROTEIN GI NO.:	110825720
OFFICIAL SYMBOL:	FOXO4
GENE ID:	4303

Background

FOR RESEARCH USE ONLY

