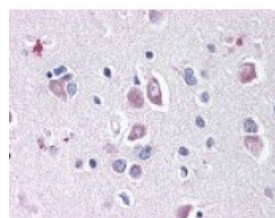




## DLL1 Antibody

CATALOG NUMBER: 49-592



Immunohistochemistry staining of DLL1 in brain tissue using DLL1 Antibody.

### Specifications

<b>SPECIES REACTIVITY:</b>	Chicken, Human, Mouse, Rat
<b>TESTED APPLICATIONS:</b>	ELISA, IHC
<b>APPLICATIONS:</b>	DLL1 antibody can be used in ELISA, and immunohistochemistry starting at 8 ug/mL.
<b>USER NOTE:</b>	Optimal dilutions for each application to be determined by the researcher.
<b>IMMUNOGEN:</b>	DLL1 antibody was raised against aa 155-173 near the N-Terminus of DLL1 (Mouse).
<b>HOST SPECIES:</b>	Rabbit

### Properties

<b>PURIFICATION:</b>	Immunoaffinity Chromatography
<b>PHYSICAL STATE:</b>	Liquid
<b>BUFFER:</b>	0.02 M potassium phosphate, 0.15 M sodium chloride, pH 7.2, 0.01% sodium azide.
<b>STORAGE CONDITIONS:</b>	Store DLL1 antibody at 4 °C or -20 °C. As with all antibodies avoid freeze/thaw cycles.
<b>CLONALITY:</b>	Polyclonal
<b>CONJUGATE:</b>	Unconjugated

### Additional Info

<b>ALTERNATE NAMES:</b>	DLL1, Delta-like 1 (Drosophila), Delta (Drosophila)-like 1, Drosophila Delta homolog 1, Delta-like protein 1, Delta1, H-Delta-1, DL1, Npa
<b>ACCESSION NO.:</b>	O00548
<b>PROTEIN GI NO.:</b>	118582508
<b>OFFICIAL SYMBOL:</b>	DLL1
<b>GENE ID:</b>	28514

### Background

FOR RESEARCH USE ONLY

