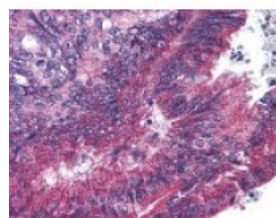




## ANAPC1 (phospho Ser377) Antibody

CATALOG NUMBER: 49-559



Immunohistochemistry staining of  
ANAPC1 in pancreatic carcinoma tissue  
using ANAPC1 Antibody.

### Specifications

<b>SPECIES REACTIVITY:</b>	Human
<b>TESTED APPLICATIONS:</b>	ELISA, IF, IHC, WB
<b>APPLICATIONS:</b>	ANAPC1 antibody can be used in ELISA starting at 1:000 - 1:1000, and immunohistochemistry starting at 10 ug/mL.
<b>USER NOTE:</b>	Optimal dilutions for each application to be determined by the researcher.
<b>SPECIFICITY:</b>	pSer377
<b>IMMUNOGEN:</b>	ANAPC1 antibody was raised against phospho amino acids 373-382 of ANAPC1 (Human).
<b>HOST SPECIES:</b>	Rabbit

### Properties

<b>PURIFICATION:</b>	Immunoaffinity Chromatography
<b>PHYSICAL STATE:</b>	Liquid
<b>BUFFER:</b>	0.02 M potassium phosphate, 0.15 M sodium chloride, pH 7.2, 0.01% sodium azide.
<b>CONCENTRATION:</b>	1 mg/ml
<b>STORAGE CONDITIONS:</b>	Store ANAPC1 antibody at 4 °C or -20 °C. As with all antibodies avoid freeze/thaw cycles.
<b>CLONALITY:</b>	Polyclonal
<b>CONJUGATE:</b>	Unconjugated

### Additional Info

<b>ALTERNATE NAMES:</b>	ANAPC1, APC1, Cyclosome subunit 1, MCPR, Mitotic checkpoint regulator, TSG24
<b>ACCESSION NO.:</b>	Q9H1A4
<b>PROTEIN GI NO.:</b>	37537845
<b>OFFICIAL SYMBOL:</b>	ANAPC1
<b>GENE ID:</b>	64682

### Background

**BACKGROUND:**

APC1 (also known as Anaphase promoting complex subunit 1, Cyclosome subunit 1, Protein Tsg24, Mitotic checkpoint regulator and ANAPC1) is 1 of at least 11 subunits of the anaphase-promoting complex (APC), which functions at the metaphase-to-anaphase transition of the cell cycle and is regulated by spindle checkpoint proteins. The APC is an E3 ubiquitin ligase that targets cell cycle regulatory proteins for degradation by the proteasome, thereby allowing progression through the cell cycle.

---

**FOR RESEARCH USE ONLY**

December 13, 2016