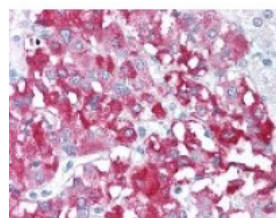




SLC3A2 Antibody [44D7]

CATALOG NUMBER: 49-543



Immunohistochemistry staining of SLC3A2
in adrenal medulla tissue using SLC3A2
monoclonal Antibody.

Specifications

SPECIES REACTIVITY:	Human
TESTED APPLICATIONS:	FACS, IHC, IP
APPLICATIONS:	SLC3A2 antibody can be used in Western Blot starting at 0.5 - 2 ug/mL, immunohistochemistry starting at 5 ug/mL, and immunoprecipitation.
USER NOTE:	Optimal dilutions for each application to be determined by the researcher.
IMMUNOGEN:	SLC3A2 monoclonal antibody was raised against HOON pre - B leukaemia cell line (Human).
HOST SPECIES:	Mouse

Properties

PURIFICATION:	Protein G Column
PHYSICAL STATE:	Liquid
BUFFER:	0.1% sodium azide.
STORAGE CONDITIONS:	SLC3A2 antibody should be stored long term (months) at -20 °C and short term (weeks) at 4 °C. As with all antibodies avoid freeze/thaw cycles.
CLONALITY:	Monoclonal
ISOTYPE:	IgG1
CONJUGATE:	Unconjugated

Additional Info

ALTERNATE NAMES:	MDU1, 4F2 cell-surface antigen heavy chain, 4F2 heavy chain antigen, 4F2hc, 4F2, CD98, 4F2HC, 4T2HC, NACAE, CD98HC
ACCESSION NO.:	P08195
PROTEIN GI NO.:	257051063
OFFICIAL SYMBOL:	SLC3A2
GENE ID:	6520

Background

BACKGROUND: Flow Cytometry Immunohistochemistry (frozen) Immunoprecipitation Recommended Secondary Reagents F(ab')₂ rabbit anti-mouse IgG HRP, F(ab')₂ rabbit anti mouse IgG: RPE conjugate Fusion Partners Spleen cells from immunized BALB/c mice were fused with cells of the SP2/0-Ag14 mouse myeloma cell line. Recommended Negative Controls Mouse IgG1 Negative Control Flow Cytometry Use 10ul of the suggested working dilution to label 10e6 cells in 100ul. Reacts with the heavy chain of the CD98 molecule. The epitope is distinct from clone 44H7, but the same as recognized by 4F2. This antibody binds to all cell lines in culture and to activated T-cells. Broad reactivity on activated and transformed cells, not hematopoietic specific, and found at lower levels on quiescent cells.

FOR RESEARCH USE ONLY

December 13, 2016