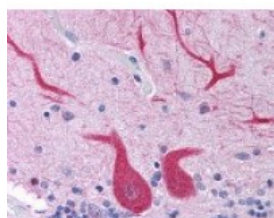




TLR10 Antibody

CATALOG NUMBER: 49-531



Immunohistochemistry staining of TLR10
in cerebellum tissue using TLR10
Antibody.

Specifications

SPECIES REACTIVITY:	Human
TESTED APPLICATIONS:	IHC, WB
APPLICATIONS:	TLR10 antibody can be used in immunohistochemistry starting at 1:50, and flow cytometry starting at 1:1.
USER NOTE:	Optimal dilutions for each application to be determined by the researcher.
HOST SPECIES:	Rabbit

Properties

PURIFICATION:	Purified
PHYSICAL STATE:	Liquid
BUFFER:	PBS, 0.02% sodium azide.
STORAGE CONDITIONS:	Store TLR10 antibody at 4 °C or -20 °C. As with all antibodies avoid freeze/thaw cycles.
CLONALITY:	Polyclonal
CONJUGATE:	Unconjugated

Additional Info

ALTERNATE NAMES:	TLR10, CD290, CD290 antigen, Toll-like receptor 10
ACCESSION NO.:	Q9BXR5
PROTEIN GI NO.:	116242819
OFFICIAL SYMBOL:	TLR10
GENE ID:	81793

Background

BACKGROUND: Toll-like receptors (TLRs) are signaling molecules that recognize different microbial products during infection and serve as an important link between the innate and adaptive immune responses. These proteins act through adaptor molecules such as MyD88 and TIRAP to activate various kinases and transcription factors. TLR10 is highly homologous to TLRs 1 and 6 and is most highly expressed in lymphoid tissues. Most recently genetic variation in TLR10 has been associated with contributing to asthma risk. It should be noted that TLR10 exists in

mice only as a pseudogene.

FOR RESEARCH USE ONLY

December 13, 2016