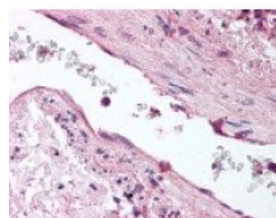




Angiopoietin-1 Antibody

CATALOG NUMBER: 49-525



Immunohistochemistry staining of
Angiopoietin-1 in lung, vessel tissue using
Angiopoietin-1 Antibody.

Specifications

SPECIES REACTIVITY:	Human, Mouse
TESTED APPLICATIONS:	ELISA, IHC, WB
APPLICATIONS:	Angiopoietin-1 antibody can be used in ELISA starting at 1 ug/mL, Western Blot starting at 1 ug/mL, and immunohistochemistry starting at 10 ug/mL.
USER NOTE:	Optimal dilutions for each application to be determined by the researcher.
IMMUNOGEN:	Angiopoietin - 1 antibody was raised against amino acids 21-40 from the C-Terminus of Angiopoietin - 1 (Mouse).
HOST SPECIES:	Rabbit

Properties

PURIFICATION:	Sterile Filtration
PHYSICAL STATE:	Liquid
BUFFER:	0.02 M potassium phosphate, 0.15 M sodium chloride, pH 7.2, 0.01% sodium azide.
STORAGE CONDITIONS:	Store Angiopoietin-1 antibody at 4 °C or -20 °C. As with all antibodies avoid freeze/thaw cycles.
CLONALITY:	Polyclonal
CONJUGATE:	Unconjugated

Additional Info

ALTERNATE NAMES:	ANGPT1, Angiopoietin 1, Angiopoietin-1, AGPT, AGP1, ANG-1, ANG1, KIAA0003
ACCESSION NO.:	Q15389
PROTEIN GI NO.:	12229574
OFFICIAL SYMBOL:	ANGPT1
GENE ID:	284

Background

BACKGROUND: Angiopoietin-1 (Ang-1) and Angiopoietin-2 (Ang-2) have importance in the development of the endothelium by regulating tyrosine phosphorylation of the membrane receptor Tie-2/Tek. Ang-1 binding to Tie-2/Tek causes

phosphorylation of the receptor. Ang-2 competes for this binding, and thus blocks receptor phosphorylation. Ang-1 has a potential fibrinogen-like domain at the carboxyl terminus and coiled-coil regions in the amino terminus. Ang-1 is prominently expressed in the myocardium of atrium and ventricle, mesenchymal and smooth muscle cells surrounding most blood vessels, and lung. In the adult, Ang-1 is also expressed in the heart and liver.

FOR RESEARCH USE ONLY

December 13, 2016