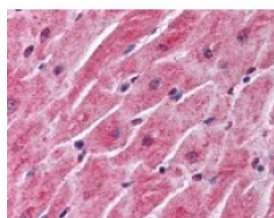




## SFRP1 Antibody

CATALOG NUMBER: 49-520



Immunohistochemistry staining of SFRP1  
in heart tissue using SFRP1 Antibody.

### Specifications

<b>SPECIES REACTIVITY:</b>	Human, Mouse
<b>TESTED APPLICATIONS:</b>	ELISA, IF, IHC, WB
<b>APPLICATIONS:</b>	SFRP1 antibody can be used in ELISA, Western Blot, immunohistochemistry starting at 5 ug/mL, and immunoprecipitation
<b>USER NOTE:</b>	Optimal dilutions for each application to be determined by the researcher.
<b>IMMUNOGEN:</b>	SFRP1 antibody was raised against amino acids 43-54 of SFRP1 (Human).
<b>HOST SPECIES:</b>	Rabbit

### Properties

<b>PURIFICATION:</b>	Immunoaffinity Chromatography
<b>PHYSICAL STATE:</b>	Liquid
<b>BUFFER:</b>	0.02 M potassium phosphate, 0.15 M sodium chloride, pH 7.2, 0.01% sodium azide.
<b>STORAGE CONDITIONS:</b>	Store SFRP1 antibody at 4 °C or -20 °C. As with all antibodies avoid freeze/thaw cycles.
<b>CLONALITY:</b>	Polyclonal
<b>CONJUGATE:</b>	Unconjugated

### Additional Info

<b>ALTERNATE NAMES:</b>	SFRP1, FrzA, FRP, SARP-2, SARP2, SFRP-1, FRP-1, FRP1
<b>ACCESSION NO.:</b>	Q8N474
<b>PROTEIN GI NO.:</b>	61216811
<b>OFFICIAL SYMBOL:</b>	SFRP1
<b>GENE ID:</b>	6422

### Background

<b>BACKGROUND:</b>	SFRP1 (also known as FRP, FRP1, SARP2, Secreted Apoptosis-related Protein 2, Secreted Frizzled-related Protein and Secreted frizzled-related protein 1) is a member of the SFRP family that contains a cysteine-rich domain homologous to the putative Wnt-binding site of Frizzled proteins. SFRPs act as soluble modulators of
--------------------	--

Wnt signaling. SFRP1 and SFRP5 may be involved in determining the polarity of photoreceptor cells in the retina.  
SFRP1 is expressed in several human tissues, with the highest levels in heart.

---

**FOR RESEARCH USE ONLY**

December 13, 2016