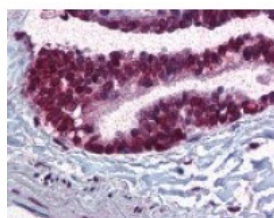




CDC16 Antibody

CATALOG NUMBER: 49-392



Immunohistochemistry staining of CDC16
in lung, respiratory epithelium tissue using
CDC16 Antibody.

Specifications

SPECIES REACTIVITY:	Human
TESTED APPLICATIONS:	ELISA, IF, IHC, WB
APPLICATIONS:	CDC16 antibody can be used in Western Blot, and immunohistochemistry starting at 10 ug/mL.
USER NOTE:	Optimal dilutions for each application to be determined by the researcher.
SPECIFICITY:	pThr580
IMMUNOGEN:	Amino acids 575-588 of Human Apc6 protein.
HOST SPECIES:	Rabbit

Properties

PURIFICATION:	Immunoaffinity Chromatography
PHYSICAL STATE:	Liquid
BUFFER:	0.02 M potassium phosphate, 0.15 M sodium chloride, pH 7.2, 0.01% sodium azide.
STORAGE CONDITIONS:	CDC16 antibody should be stored long term (months) at -20 °C and short term (weeks) at 4 °C. As with all antibodies avoid freeze/thaw cycles.
CLONALITY:	Polyclonal
CONJUGATE:	Unconjugated

Additional Info

ALTERNATE NAMES:	CDC16, ANAPC6, APC6, CDC16 homolog, Cyclosome subunit 6, CDC16Hs, CUT9
ACCESSION NO.:	Q13042
PROTEIN GI NO.:	37537763
OFFICIAL SYMBOL:	CDC16
GENE ID:	8881

Background

