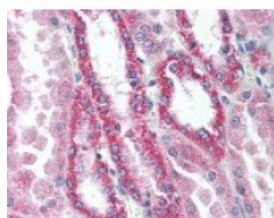




## SNF1LK2 Antibody

CATALOG NUMBER: 49-319



Immunohistochemistry staining of  
SNF1LK2 in kidney tissue using SNF1LK2  
Antibody.

### Specifications

<b>SPECIES REACTIVITY:</b>	Bovine, Chimpanzee, Dog, Human, Mouse, Rat
<b>TESTED APPLICATIONS:</b>	IHC, WB
<b>APPLICATIONS:</b>	SNF1LK2 antibody can be used in ELISA, Western Blot starting at 1:500 - 1:1000, immunohistochemistry starting at 5 ug/mL, and immunofluorescence starting at 10 ug/mL.
<b>USER NOTE:</b>	Optimal dilutions for each application to be determined by the researcher.
<b>SPECIFICITY:</b>	Human SIK2 is a 926 amino acid protein. The approximately 120 kD band is higher than the theoretical expected size, but this band, as well as the approximately 25 kD lower band, are blocked by immunizing peptide.
<b>IMMUNOGEN:</b>	A portion of amino acids 100-150 of human SIK2.
<b>HOST SPECIES:</b>	Rabbit

### Properties

<b>PURIFICATION:</b>	Protein G Column
<b>PHYSICAL STATE:</b>	Liquid
<b>BUFFER:</b>	PBS, 0.05% BSA, 0.05% sodium azide
<b>STORAGE CONDITIONS:</b>	SNF1LK2 antibody can be stored short term 4 °C. For long term storage aliquot and store at -20 °C. As with all antibodies avoid freeze/thaw cycles.
<b>CLONALITY:</b>	Polyclonal
<b>CONJUGATE:</b>	Unconjugated

### Additional Info

<b>ALTERNATE NAMES:</b>	SIK2, KIAA0781, LOH11CR11, SNF1LK2, QIK, Qin-induced kinase, Salt-inducible kinase 2, SIK-2, SNF1-like kinase 2
<b>ACCESSION NO.:</b>	Q9H0K1
<b>PROTEIN GI NO.:</b>	59798973
<b>OFFICIAL SYMBOL:</b>	SIK2
<b>GENE ID:</b>	23235

