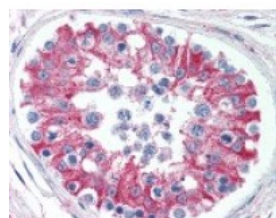




SMAD6 Antibody

CATALOG NUMBER: 49-316



Immunohistochemistry staining of SMAD6
in testis tissue using SMAD6 Antibody.

Specifications

SPECIES REACTIVITY:	Human, Pig
TESTED APPLICATIONS:	IHC, WB
APPLICATIONS:	SMAD6 antibody can be used in ELISA, Western Blot starting at 1:500 - 1:1000, and immunohistochemistry starting at 3 ug/mL.
USER NOTE:	Optimal dilutions for each application to be determined by the researcher.
SPECIFICITY:	A 52 kD band is observed.
IMMUNOGEN:	SMAD6 antibody was raised against amino acids 85 - 99 of SMAD6 (Human).
HOST SPECIES:	Rabbit

Properties

PURIFICATION:	Protein G Column
PHYSICAL STATE:	Liquid
BUFFER:	PBS, 0.05% BSA, 0.05% sodium azide.
STORAGE CONDITIONS:	SMAD6 antibody can be stored short term 4 °C. For long term storage aliquot and store at -20 °C. As with all antibodies avoid freeze/thaw cycles.
CLONALITY:	Polyclonal
ISOTYPE:	IgG
CONJUGATE:	Unconjugated

Additional Info

ALTERNATE NAMES:	SMAD6, AOVD2, HSMAD6, HsT17432, SMAD 6, MADH7, Mothers against DPP homolog 6, SMAD family member 6, MAD homolog 6, MADH6
ACCESSION NO.:	O43541
PROTEIN GI NO.:	115502451
OFFICIAL SYMBOL:	SMAD6
GENE ID:	4091

Background

BACKGROUND:

SMADs are members of the MAD-related family of molecules. MAD-related proteins are a family of intracellular proteins that are essential components in the signaling pathways of the serine/threonine kinase receptors of the transforming growth factor beta superfamily. SMADs can be divided into receptor-regulated SMADs (R-SMADs: SMAD1, SMAD2, SMAD5, SMAD8 and SMAD9), common-mediator SMAD (co-SMAD: SMAD4), and inhibitory SMADs (I-SMADs: SMAD6 and SMAD7). SMAD1, SMAD5, SMAD8 and SMAD9 have high degrees of homology and antibodies are available that recognize sequences common to all of them. SMAD8 and SMAD9 are typically used as alternate names for one another in the literature. Human SMAD1 is a 465 amino acid protein; GenBank Accession No. AAP36050.1. Human SMAD2 is a 467 amino acid protein; GenBank Accession No. AAC51918.1 Human SMAD3 is a 425 amino acid protein; GenBank Accession No. NP_005893.1 Human SMAD4 is a 552 amino acid protein GenBank Accession No. NP_005350.1. Human SMAD5 is a 465 amino acid protein; GenBank Accession No. AAC50791.1. Human SMAD6 is a 496 amino acid protein; GenBank Accession No. AAH12986.1 Human SMAD7 is a 426 amino acid protein; GenBank Accession No. AAB81354.1 Mouse SMAD8 is a 430 amino acid protein; GenBank Accession No. AAN85445.1 Human SMAD9 is a 430 amino acid protein; GenBank Accession No. NP_005896.1.

FOR RESEARCH USE ONLY

December 13, 2016