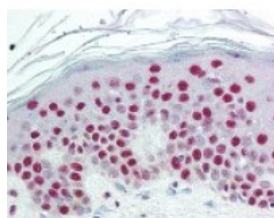




SET Antibody

CATALOG NUMBER: 49-309



Immunohistochemistry staining of SET in skin tissue using SET Antibody.

Specifications

SPECIES REACTIVITY:	Bovine, Chicken, Hamster, Horse, Human, Monkey, Mouse, Pig, Rat, Xenopus, Zebrafish
TESTED APPLICATIONS:	IHC, WB
APPLICATIONS:	SET antibody can be used in ELISA, Western Blot, immunohistochemistry starting at 5 ug/mL, and immunofluorescence starting at 10 ug/mL.
USER NOTE:	Optimal dilutions for each application to be determined by the researcher.
SPECIFICITY:	An approx. 37 kD band is observed.
IMMUNOGEN:	SET antibody was raised against amino acids 66 - 81 of SET (Human).
HOST SPECIES:	Rabbit

Properties

PURIFICATION:	Protein G Column
PHYSICAL STATE:	Liquid
BUFFER:	PBS, 0.02% sodium azide, 0.1 mg/mL BSA.
STORAGE CONDITIONS:	SET antibody can be stored short term 4 °C. For long term storage aliquot and store at -20 °C. As with all antibodies avoid freeze/thaw cycles.
CLONALITY:	Polyclonal
ISOTYPE:	IgG
CONJUGATE:	Unconjugated

Additional Info

ALTERNATE NAMES:	SET, 2PP2A, HLA-DR-associated protein II, I-2PP2A, TAF-IBETA, SET nuclear oncogene, TAF-I, Template-activating factor I, I2PP2A, IGAAD, IPP2A2, PHAPII, Protein SET
ACCESSION NO.:	Q01105
PROTEIN GI NO.:	46397790
OFFICIAL SYMBOL:	SET
GENE ID:	6418

Background

BACKGROUND: INHAT (inhibitor of acetyltransferases) complex binds to histones and masks them from being substrate for acetyltransferase. Endogenous INHAT subunits, which include the Set/TAF-Ibeta oncoprotein, associate with chromatin in vivo and can block coactivator mediated transcription when transfected in cells.

FOR RESEARCH USE ONLY

December 13, 2016