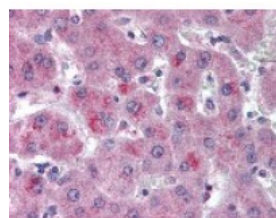




HTRA3 Antibody

CATALOG NUMBER: 49-293



Immunohistochemistry staining of HTRA3
in liver tissue using HTRA3 Antibody.

Specifications

SPECIES REACTIVITY:	Gibbon, Human, Monkey, Rat
TESTED APPLICATIONS:	IHC, WB
APPLICATIONS:	HTRA3 antibody can be used in ELISA, Western Blot, immunohistochemistry starting at 5 ug/mL, and immunofluorescence starting at 15 ug/mL.
USER NOTE:	Optimal dilutions for each application to be determined by the researcher.
SPECIFICITY:	The amino acid sequence is 100% homologous in HtrA3, 80% homologous in HtrA1 and 71% homologous in HtrA2 and HtrA4.
IMMUNOGEN:	HTRA3 antibody was raised against amino acids 250 - 300 of HTRA3 (Human).
HOST SPECIES:	Rabbit

Properties

PURIFICATION:	Protein G Column
PHYSICAL STATE:	Liquid
BUFFER:	PBS, 0.2% gelatin, 0.05% sodium azide.
STORAGE CONDITIONS:	HTRA3 antibody can be stored short term 4 °C. For long term storage aliquot and store at -20 °C. As with all antibodies avoid freeze/thaw cycles.
CLONALITY:	Polyclonal
ISOTYPE:	IgG
CONJUGATE:	Unconjugated

Additional Info

ALTERNATE NAMES:	HTRA3, HtrA serine peptidase 3, Serine protease HTRA3, Tasp, Probable serine protease HTRA3, PRSP
ACCESSION NO.:	P83110
PROTEIN GI NO.:	21542412
OFFICIAL SYMBOL:	HTRA3
GENE ID:	94031

Background

BACKGROUND: HtrA3 belongs to the human high-temperature requirement factor A (HtrA) family. It is also called pregnancy-related serine protease. HtrA3 has two isoforms (long and short), which is produced by alternative splicing. Similar to HtrA1, HtrA3 binds to various TGF- β proteins and inhibited the signaling of BMP-4, -2 and TGF- β 1. HtrA3 does not inhibit signaling originated from a constitutively active BMP receptor, indicating that the inhibition occurred upstream of the cell surface receptor.

FOR RESEARCH USE ONLY

December 13, 2016