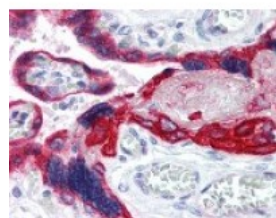




KRT19 Antibody

CATALOG NUMBER: 49-168



Immunohistochemistry staining of KRT19
in placenta tissue using KRT19 Antibody.

Specifications

SPECIES REACTIVITY:	Dog, Human, Monkey, Mouse
TESTED APPLICATIONS:	IHC, WB
APPLICATIONS:	KRT19 antibody can be used in ELISA, Western Blot, and immunohistochemistry starting at 5 ug/mL.
USER NOTE:	Optimal dilutions for each application to be determined by the researcher.
IMMUNOGEN:	KRT19 antibody was raised against an internal peptide of KRT19 (Human).
HOST SPECIES:	Rabbit

Properties

PURIFICATION:	Immunoaffinity Chromatography
PHYSICAL STATE:	Liquid
BUFFER:	PBS, pH 7.4, 0.05% sodium azide.
STORAGE CONDITIONS:	Store KRT19 antibody at 4 °C or -20 °C. As with all antibodies avoid freeze/thaw cycles.
CLONALITY:	Polyclonal
CONJUGATE:	Unconjugated

Additional Info

ALTERNATE NAMES:	KRT19, CK19, Cytokeratin 19, Cytokeratin-19, Keratin 19, Keratin-19, CK-19, K19, K1CS, Keratin, type I, 40-kd
ACCESSION NO.:	P08727
PROTEIN GI NO.:	311033484
OFFICIAL SYMBOL:	KRT19
GENE ID:	3880

Background

FOR RESEARCH USE ONLY