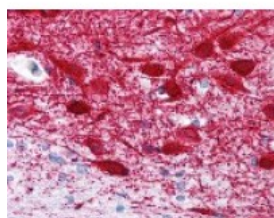




## MAP2 Antibody [MT-08]

CATALOG NUMBER: 49-111



Immunohistochemistry staining of MAP2 in brain cortex tissue using MAP2 monoclonal Antibody.

### Specifications

<b>SPECIES REACTIVITY:</b>	Bovine, Human, Mouse, Pig
<b>TESTED APPLICATIONS:</b>	ELISA, ICC, IHC, IP, WB
<b>APPLICATIONS:</b>	ELISA, ICC, IHC-Fr, IHC-P (10 ug/ml), IP, WB
<b>USER NOTE:</b>	Optimal dilutions for each application to be determined by the researcher.
<b>SPECIFICITY:</b>	Recongizes an epitope (aa 1375-1395) located in central domain of molecule Microtubule Associated Protein 2ab (MAP2ab).
<b>IMMUNOGEN:</b>	MAP2 monoclonal antibody was raised against microtubule protein from bovine brain enriched for kinesin (Bovine)
<b>HOST SPECIES:</b>	Mouse

### Properties

<b>PURIFICATION:</b>	Protein A Column
<b>PHYSICAL STATE:</b>	Liquid
<b>BUFFER:</b>	PBS, 15 mM sodium azide, approx., pH 7.4.
<b>STORAGE CONDITIONS:</b>	MAP2 antibody can be stored short term 4 °C. For long term storage aliquot and store at -20 °C. As with all antibodies avoid freeze/thaw cycles.
<b>CLONALITY:</b>	Monoclonal
<b>ISOTYPE:</b>	IgG1
<b>CONJUGATE:</b>	Unconjugated

### Additional Info

<b>ALTERNATE NAMES:</b>	MAP2, MAP2C, MAP-2, MAP2A, MAP2B
<b>ACCESSION NO.:</b>	P11137
<b>PROTEIN GI NO.:</b>	215274255
<b>OFFICIAL SYMBOL:</b>	MAP2
<b>GENE ID:</b>	4133

