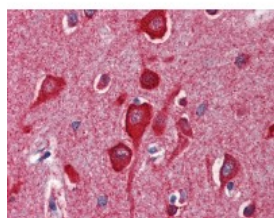




## Cytochrome c Antibody [7H8.2C12]

CATALOG NUMBER: 49-095



Human brain cortex tissue stained with CYCS Antibody, alkaline phosphatase-streptavidin and chromogen.

### Specifications

<b>SPECIES REACTIVITY:</b>	Bovine, Guinea Pig, Hamster, Horse, Human, Monkey, Mouse, Pig, Rat, Sheep
<b>TESTED APPLICATIONS:</b>	IHC, WB
<b>APPLICATIONS:</b>	Cytochrome c antibody can be used in Western Blot, and immunohistochemistry starting at 5 ug/mL.
<b>USER NOTE:</b>	Optimal dilutions for each application to be determined by the researcher.
<b>SPECIFICITY:</b>	Detects an ~14kD protein, corresponding to the apparent molecular mass of Cytochrome c on Western blots with samples from human, mouse, rat, bovine, guinea pig, hamster, monkey, rabbit and sheep origins
<b>IMMUNOGEN:</b>	Cytochrome C purified from horse.
<b>HOST SPECIES:</b>	Mouse

### Properties

<b>PURIFICATION:</b>	Protein G Column
<b>PHYSICAL STATE:</b>	Liquid
<b>BUFFER:</b>	PBS, pH 7.2, 50% glycerol, 0.09% azide
<b>STORAGE CONDITIONS:</b>	Cytochrome c antibody can be stored short term 4 °C. For long term storage aliquot and store at -20 °C. As with all antibodies avoid freeze/thaw cycles.
<b>CLONALITY:</b>	Monoclonal
<b>ISOTYPE:</b>	IgG2b
<b>CONJUGATE:</b>	Unconjugated

### Additional Info

<b>ALTERNATE NAMES:</b>	CYCS, CYC, HCS, THC4, Cytochrome c, Cytochrome c, somatic
<b>ACCESSION NO.:</b>	P99999
<b>PROTEIN GI NO.:</b>	42560196
<b>OFFICIAL SYMBOL:</b>	CYCS
<b>GENE ID:</b>	54205

FOR RESEARCH USE ONLY

December 13, 2016