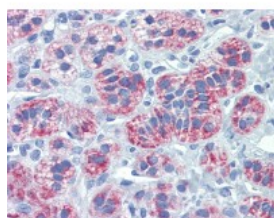




SMAC Antibody [79-1-83]

CATALOG NUMBER: 49-090



Human adrenal tissue stained with
DIABLO Antibody, alkaline phosphatase-
streptavidin and chromogen.

Specifications

SPECIES REACTIVITY:	Human, Monkey
TESTED APPLICATIONS:	IHC, WB
APPLICATIONS:	SMAC antibody can be used in ELISA, Western Blot, and immunohistochemistry starting at 2.5 ug/mL.
USER NOTE:	Optimal dilutions for each application to be determined by the researcher.
IMMUNOGEN:	Recombinant human Smac/DIABLO protein.
HOST SPECIES:	Mouse

Properties

PURIFICATION:	Protein G Column
PHYSICAL STATE:	Liquid
BUFFER:	PBS, pH 7.2, 0.09% azide, 50% glycerol
STORAGE CONDITIONS:	Store SMAC antibody at -20 °C.
CLONALITY:	Monoclonal
ISOTYPE:	IgG2b
CONJUGATE:	Unconjugated

Additional Info

ALTERNATE NAMES:	DIABLO, DFNA64, DIABLO-S, Diablo homolog, mitochondrial, SMAC3, Mitochondrial Smac protein, SMAC
ACCESSION NO.:	Q9NR28
PROTEIN GI NO.:	18203316
OFFICIAL SYMBOL:	DIABLO
GENE ID:	56616

Background

FOR RESEARCH USE ONLY

