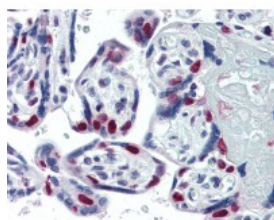




## PARP1 Antibody [A6.4.12]

CATALOG NUMBER: 49-051



Human placenta tissue stained with  
PARP1 Antibody, alkaline phosphatase-  
streptavidin and chromogen.

### Specifications

<b>SPECIES REACTIVITY:</b>	Drosophila, Hamster, Human, Mouse, Rat, Xenopus
<b>TESTED APPLICATIONS:</b>	ELISA, IHC, IP, WB
<b>APPLICATIONS:</b>	PARP1 antibody can be used in ELISA, Western Blot, immunohistochemistry starting at 2-5 ug/mL, immunofluorescence, and immunoprecipitation.
<b>USER NOTE:</b>	Optimal dilutions for each application to be determined by the researcher.
<b>SPECIFICITY:</b>	Recognizes poly (ADP-ribose) polymerase 1 (PARP-1), a ~116kD nuclear enzyme cleaved during apoptosis. PARP-1, a caretaker enzyme, is involved in DNA damage repair, plays roles in diabetes pathophysiology and tumor proliferation.). As well as protecti ...
<b>IMMUNOGEN:</b>	Human PARP
<b>HOST SPECIES:</b>	Mouse

### Properties

<b>PURIFICATION:</b>	Protein G Column
<b>PHYSICAL STATE:</b>	Liquid
<b>BUFFER:</b>	0.09% sodium azide.
<b>STORAGE CONDITIONS:</b>	PARP1 antibody should be stored long term (months) at -20 °C and short term (weeks) at 4 °C. As with all antibodies avoid freeze/thaw cycles.
<b>CLONALITY:</b>	Monoclonal
<b>ISOTYPE:</b>	IgG1
<b>CONJUGATE:</b>	Unconjugated

### Additional Info

<b>ALTERNATE NAMES:</b>	PARP1, ADPRT, ADP-ribosyltransferase NAD(+), Adp-ribosyltransferase, ADPRT1, ARTD1, ADPRT 1, Poly(ADP-ribose) synthetase, Poly(ADP-ribosyl)transferase, PARP, Poly [ADP-ribose] polymerase 1, PADPRT-1, PARP-1, Poly (ADP-ribose) polymerase 1, Poly(ADP-ribose) polymerase, Poly[ADP-ribose] synthase 1, PPOL
<b>ACCESSION NO.:</b>	P09874

PROTEIN GI NO.: 130781

OFFICIAL SYMBOL: PARP1

GENE ID: 142

## Background

FOR RESEARCH USE ONLY

December 13, 2016