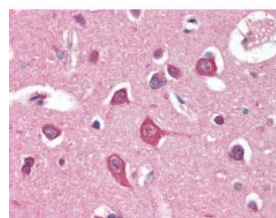




## PINK1 Antibody [38CT18.7]

CATALOG NUMBER: 49-049



Human brain cortex tissue stained with PINK1 Antibody, alkaline phosphatase-streptavidin and chromogen.

### Specifications

<b>SPECIES REACTIVITY:</b>	Human, Mouse
<b>TESTED APPLICATIONS:</b>	ELISA, IHC, WB
<b>APPLICATIONS:</b>	PINK1 antibody can be used in Western Blot, and immunohistochemistry starting at 5 ug/mL.
<b>USER NOTE:</b>	Optimal dilutions for each application to be determined by the researcher.
<b>IMMUNOGEN:</b>	Recombinant PINK1 protein
<b>HOST SPECIES:</b>	Mouse

### Properties

<b>PURIFICATION:</b>	Ascites
<b>PHYSICAL STATE:</b>	Liquid
<b>BUFFER:</b>	0.09% sodium azide
<b>STORAGE CONDITIONS:</b>	Maintain refrigerated PINK1 antibody at 2-8 °C for up to 6 months. For long term storage store at -20 °C.
<b>CLONALITY:</b>	Monoclonal
<b>CONJUGATE:</b>	Unconjugated

### Additional Info

<b>ALTERNATE NAMES:</b>	PINK1, BRPK, PTEN induced putative kinase 1, PARK6, PTEN-induced putative kinase, Protein kinase BRPK
<b>ACCESSION NO.:</b>	Q9BXM7
<b>PROTEIN GI NO.:</b>	48428484
<b>OFFICIAL SYMBOL:</b>	PINK1
<b>GENE ID:</b>	65018

### Background

FOR RESEARCH USE ONLY

