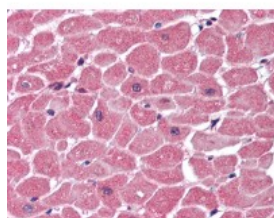




Beta-actin Antibody [4E8H3]

CATALOG NUMBER: 49-048



Human heart tissue stained with ACTB
Antibody, alkaline phosphatase-
streptavidin and chromogen.

Specifications

SPECIES REACTIVITY:	Human
TESTED APPLICATIONS:	ELISA, IHC, WB
APPLICATIONS:	Beta-actin antibody can be used in Western Blot, and immunohistochemistry starting at 10 ug/mL.
USER NOTE:	Optimal dilutions for each application to be determined by the researcher.
IMMUNOGEN:	ACTB recombinant protein.
HOST SPECIES:	Mouse

Properties

PURIFICATION:	Ascites
PHYSICAL STATE:	Liquid
BUFFER:	0.09% sodium azide
STORAGE CONDITIONS:	Maintain refrigerated Beta-actin antibody at 2-8 °C for up to 6 months. For long term storage store at -20 °C.
CLONALITY:	Monoclonal
CONJUGATE:	Unconjugated

Additional Info

ALTERNATE NAMES:	ACTB, Actin, cytoplasmic 1, Beta-actin, Beta actin, BRWS1, Actin, beta, Beta cytoskeletal actin, PS1TP5-binding protein 1, PS1TP5BP1
ACCESSION NO.:	P60709
PROTEIN GI NO.:	46397333
OFFICIAL SYMBOL:	ACTB
GENE ID:	60

Background

FOR RESEARCH USE ONLY

