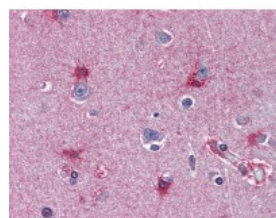




MAT2A Antibody [AT3A2]

CATALOG NUMBER: 49-008



Human brain cortex tissue stained with MAT2A Antibody at 10 ug/mL followed by biotinylated anti-mouse IgG secondary antibody, alkaline phosphatase-streptavidin and chromogen.

Specifications

SPECIES REACTIVITY:	Human
TESTED APPLICATIONS:	ELISA, IHC, WB
APPLICATIONS:	MAT2A antibody can be used in Western Blot starting at 5 - 2 ug/mL, and immunohistochemistry starting at 20 ug/mL.
USER NOTE:	Optimal dilutions for each application to be determined by the researcher.
IMMUNOGEN:	Recombinant human MAT2A (1-395aa) purified from E. coli
HOST SPECIES:	Mouse

Properties

PURIFICATION:	Protein G Column
PHYSICAL STATE:	Liquid
BUFFER:	PBS, pH 7.4, 0.1% sodium azide
STORAGE CONDITIONS:	MAT2A antibody can be stored short term 4 °C. For long term storage aliquot and store at -20 °C. As with all antibodies avoid freeze/thaw cycles.
CLONALITY:	Monoclonal
ISOTYPE:	IgG2b,k
CONJUGATE:	Unconjugated

Additional Info

ALTERNATE NAMES:	MAT2A, AdoMet synthase 2, AMS2, AdoMet synthetase 2, MATA2, MATII, MAT 2, MAT-II, SAMS2
ACCESSION NO.:	P31153
PROTEIN GI NO.:	400245
OFFICIAL SYMBOL:	MAT2A
GENE ID:	4144

