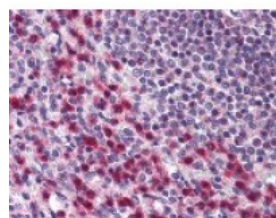




## BCLAF1 Antibody

CATALOG NUMBER: 48-923



Immunohistochemistry staining of BCLAF1  
in spleen tissue using BCLAF1 Antibody.

### Specifications

<b>SPECIES REACTIVITY:</b>	Chicken, Chimpanzee, Dog, Human, Mouse
<b>TESTED APPLICATIONS:</b>	IHC, WB
<b>APPLICATIONS:</b>	BCLAF1 antibody can be used in ELISA, Western Blot, immunohistochemistry starting at 5 ug/mL, and immunofluorescence starting at 10 ug/mL.
<b>USER NOTE:</b>	Optimal dilutions for each application to be determined by the researcher.
<b>SPECIFICITY:</b>	A portion of amino acids 700-750 of human BCLAF1.
<b>IMMUNOGEN:</b>	A portion of amino acids 700-750 of human BCLAF1.
<b>HOST SPECIES:</b>	Rabbit

### Properties

<b>PURIFICATION:</b>	Immunoaffinity Chromatography
<b>PHYSICAL STATE:</b>	Liquid
<b>BUFFER:</b>	PBS, 0.2% gelatin, 0.05% sodium azide.
<b>STORAGE CONDITIONS:</b>	BCLAF1 antibody can be stored short term 4 °C. For long term storage aliquot and store at -20 °C. As with all antibodies avoid freeze/thaw cycles.
<b>CLONALITY:</b>	Polyclonal
<b>CONJUGATE:</b>	Unconjugated

### Additional Info

<b>ALTERNATE NAMES:</b>	BCLAF1, BK211L9.1, BTF, KIAA0164
<b>ACCESSION NO.:</b>	Q9NYF8
<b>PROTEIN GI NO.:</b>	47605556
<b>OFFICIAL SYMBOL:</b>	BCLAF1
<b>GENE ID:</b>	9774

### Background

<b>BACKGROUND:</b>	This gene encodes a transcriptional repressor that interacts with several members of the BCL2 family of
--------------------	---

proteins. Overexpression of this protein induces apoptosis, which can be suppressed by co-expression of BCL2 proteins. The protein localizes to dot-like structures throughout the nucleus, and redistributes to a zone near the nuclear envelope in cells undergoing apoptosis. Multiple transcript variants encoding different isoforms have been found for this gene.

---

**FOR RESEARCH USE ONLY**

December 13, 2016