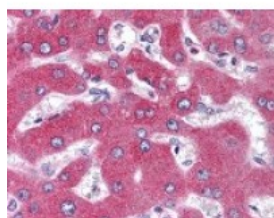




GPR77 Antibody

CATALOG NUMBER: 48-918



Immunohistochemistry staining of GPR77
in liver tissue using GPR77 Antibody.

Specifications

SPECIES REACTIVITY:	Bovine, Chimpanzee, Human, Monkey
TESTED APPLICATIONS:	IHC, WB
APPLICATIONS:	GPR77 antibody can be used in ELISA, Western Blot, and immunohistochemistry starting at 10 ug/mL.
USER NOTE:	Optimal dilutions for each application to be determined by the researcher.
SPECIFICITY:	The amino acid sequence used as immunogen is 100% homologous in human, and chimp (isoforms 1, 2, 3, and 4), 88% homologous in rhesus monkey (isoforms 1, 2, 3), and 76% homologous in bovine (isoforms 1 and 2).
IMMUNOGEN:	A portion of amino acids 1-50 of human GPR77.
HOST SPECIES:	Rabbit

Properties

PURIFICATION:	Immunoaffinity Chromatography
PHYSICAL STATE:	Liquid
BUFFER:	PBS, 0.2% gelatin, 0.05% sodium azide.
STORAGE CONDITIONS:	GPR77 antibody can be stored short term 4 °C. For long term storage aliquot and store at -20 °C. As with all antibodies avoid freeze/thaw cycles.
CLONALITY:	Polyclonal
ISOTYPE:	IgG
CONJUGATE:	Unconjugated

Additional Info

ALTERNATE NAMES:	GPR77, G-protein coupled receptor 77, GPF77, C5L2, G protein-coupled receptor 77
ACCESSION NO.:	Q9P296
PROTEIN GI NO.:	20137533
OFFICIAL SYMBOL:	GPR77
GENE ID:	27202

Background

BACKGROUND:

C5L2 is an Anaphylatoxin Receptor. Binding to anaphylatoxins can result in increased triglyceride synthesis, although its precise role in cellular responses has not been determined.

FOR RESEARCH USE ONLY

December 13, 2016