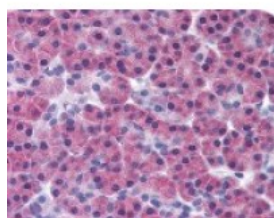




RIPK3 Antibody

CATALOG NUMBER: 48-909



Immunohistochemistry staining of RIPK3
in pancreas tissue using RIPK3 Antibody.

Specifications

SPECIES REACTIVITY:	Gorilla, Human
TESTED APPLICATIONS:	IHC, WB
APPLICATIONS:	RimmunoprecipitationK3 antibody can be used in ELISA, Western Blot, and immunohistochemistry starting at 10 ug/mL.
USER NOTE:	Optimal dilutions for each application to be determined by the researcher.
SPECIFICITY:	A portion of amino acids 480-530 of human RIP3.
IMMUNOGEN:	RIPK3 antibody was raised against amino acids 480 - 518 of RIPK3 (Human).
HOST SPECIES:	Rabbit

Properties

PURIFICATION:	Immunoaffinity Chromatography
PHYSICAL STATE:	Liquid
BUFFER:	PBS, 0.2% gelatin, 0.05% sodium azide.
STORAGE CONDITIONS:	RIPK3 antibody can be stored short term 4 °C. For long term storage aliquot and store at -20 °C. As with all antibodies avoid freeze/thaw cycles.
CLONALITY:	Polyclonal
ISOTYPE:	IgG
CONJUGATE:	Unconjugated

Additional Info

ALTERNATE NAMES:	RIPK3, Receptor interacting protein 3, RIP-like protein kinase 3, RIP3, RIP-3, Receptor-interacting protein 3
ACCESSION NO.:	Q9Y572
PROTEIN GI NO.:	205371831
OFFICIAL SYMBOL:	RIPK3
GENE ID:	11035

Background

BACKGROUND: RIPK3 belongs to the RIP subfamily of kinases. RIP3 binds RIP through this unique C-terminal segment to inhibit RIP and TNFR1 mediated NF- κ B activation and induce apoptosis.

FOR RESEARCH USE ONLY

December 13, 2016